

TEMPORARY TRAFFIC CONTROL SIGN SUMMARY

IDENTIFI- CATION NUMBER	SIZE OF SIGN		TEXT	TEXT DIMENSIONS (INCHES)			COLOR		
	WIDTH	HEIGHT		LETTER HEIGHT	VERTICAL SPACING	ARROW RTE. MKR.	BACK- GROUND	LEGEND	BORDER
MA-P2-10a	48"	36"	WORK ZONE SPEEDING FINES DOUBLED	AS PER MASSDOT STANDARD		FILLOVER- ESCENT ORANGE	BLACK	BLACK	
MA-P2-10b	36"	48"	NO ROAD WORK ROUTES HERE			FILLOVER- ESCENT ORANGE WHITE	BLACK	BLACK	
MA-9a	24"	18"	END DETOUR	SEE FHWA STANDARD HIGHWAY SIGNS, 2004 EDITION, AS AMENDED		ORANGE	BLACK	BLACK	
MA-9L	30"	24"	DETOUR ←			ORANGE	BLACK	BLACK	
MA-9aL	30"	24"	DETOUR ↑			ORANGE	BLACK	BLACK	
MA-9bL	30"	24"	DETOUR ↙			ORANGE	BLACK	BLACK	
MA-9R	30"	24"	DETOUR →			ORANGE	BLACK	BLACK	

- NOTES:  
 1. HIGH INTENSITY REFLECTIVE SHEETING SHALL BE USED FOR ALL SIGNS. SEE FHWA "STANDARD HIGHWAY SIGNS, 2004 EDITION" FOR TEXT DIMENSIONS, AS AMENDED; THE 1977 MASSHIGHWAY DEPARTMENT CONSTRUCTION AND TRAFFIC STANDARD DETAILS, AS AMENDED, FOR SIGNS AND SUPPORTS; THE MASSHIGHWAY DEPARTMENT SIGN LISTINGS 1993 EDITION, AS AMENDED; AND THE 2017 MASSDOT STANDARD SIGN BOOK, AS AMENDED.  
 2. ALL SIGNS SHOWN GRAPHICALLY FOR INFORMATION ONLY. SIGN VENDOR SHALL FABRICATE ALL SIGNS IN ACCORDANCE WITH THE APPLICABLE STANDARDS.

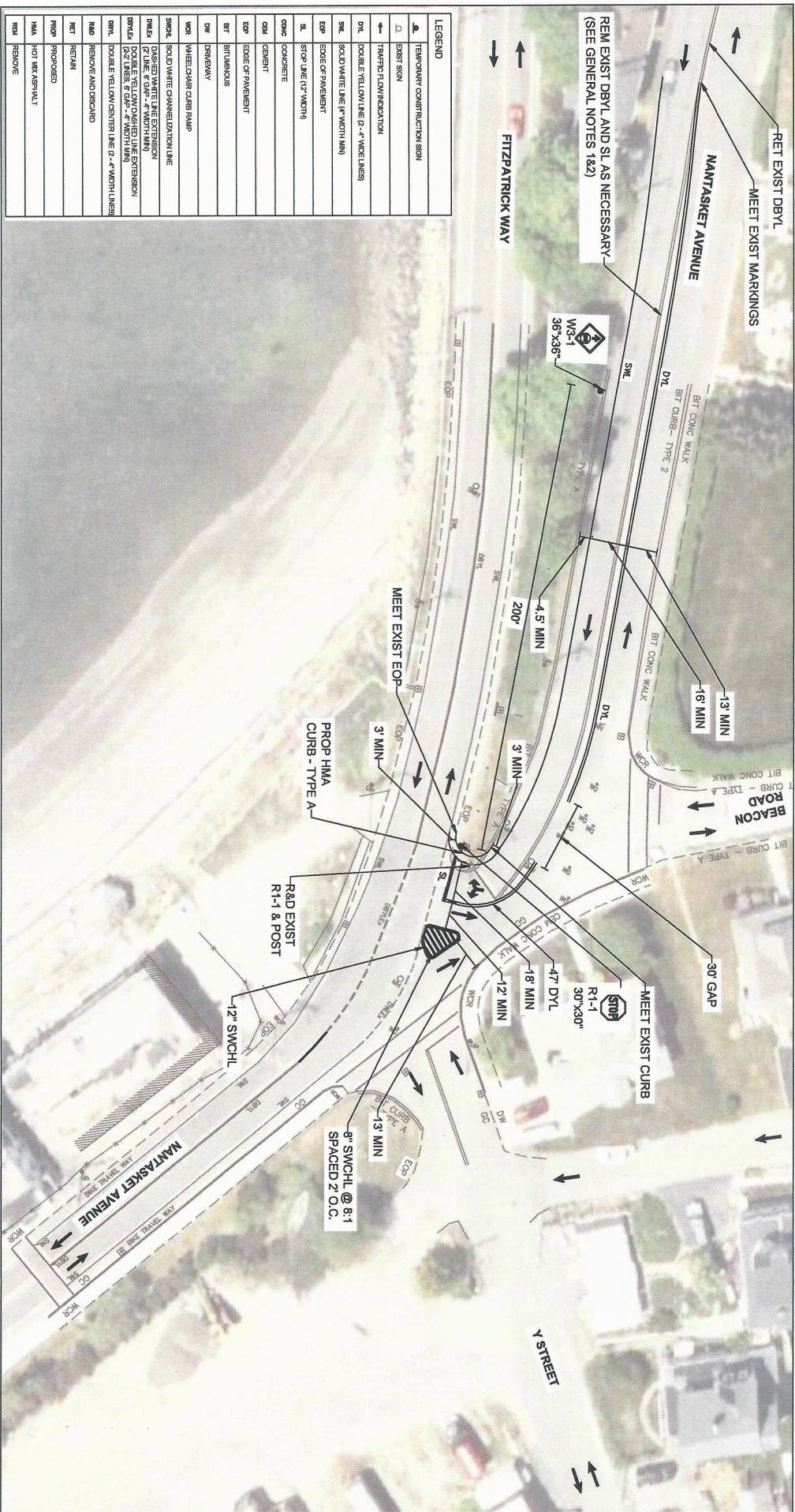
TEMPORARY TRAFFIC CONTROL SIGN SUMMARY

IDENTIFI- CATION NUMBER	SIZE OF SIGN		TEXT	TEXT DIMENSIONS (INCHES)			COLOR		
	WIDTH	HEIGHT		LETTER HEIGHT	VERTICAL SPACING	ARROW RTE. MKR.	BACK- GROUND	LEGEND	BORDER
MA-10L	18"	48"	DETOUR ←	SEE FHWA STANDARD HIGHWAY SIGNS, 2004 EDITION, AS AMENDED		ORANGE	BLACK	BLACK	
MA-10R	18"	48"	DETOUR →			ORANGE	BLACK	BLACK	
R11-2	48"	30"	ROAD CLOSED			WHITE	BLACK	BLACK	
R11-3a(MOD)	60"	30"	ROAD CLOSED NO TRAFFIC AHEAD			WHITE	BLACK	BLACK	
W20-1c	36"	36"	ROAD WORK AHEAD			ORANGE	BLACK	BLACK	
W20-2c	36"	36"	DETOUR AHEAD			ORANGE	BLACK	BLACK	
W20-3c	36"	36"	ROAD WORK AHEAD			ORANGE	BLACK	BLACK	
SP-1	48"	36"	NANTASKET AVENUE AHEAD			ORANGE	BLACK	BLACK	



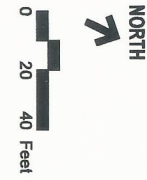
Northeast Traffic Control Services, Inc.  
 Manafort Transit  
 Construction of Seawall  
 Nantasket Avenue Hill, MA  
 Temporary Traffic Control Plan  
 Sign Summary  
 6/20/2024





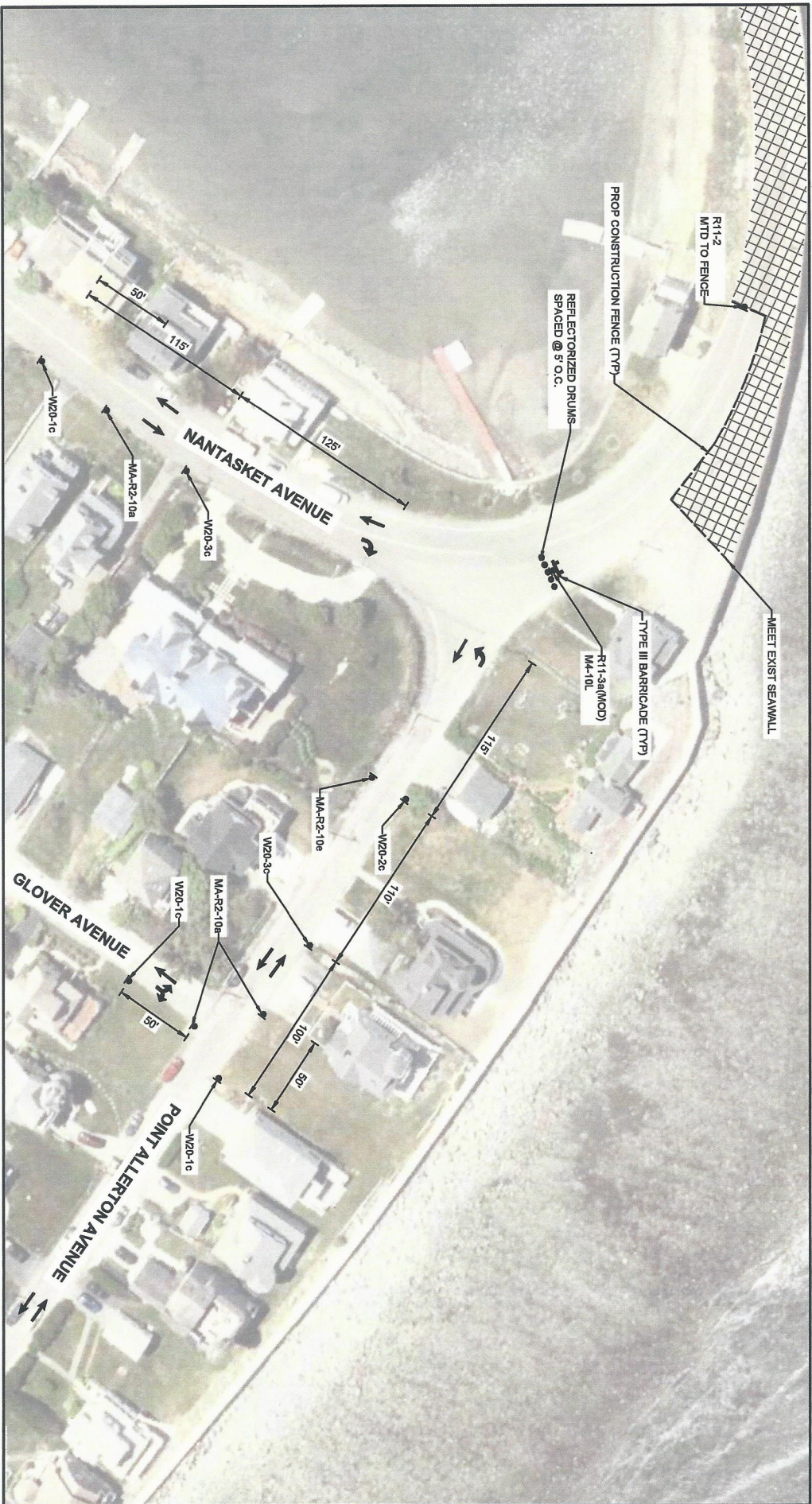
LEGEND	
▲	TEMPORARY CONSTRUCTION SIGN
▽	EXIST SIGN
→	TRAFFIC FLOW INDICATION
DYL	DOUBLE YELLOW LINE (4'-4" WIDE LINES)
SWL	SOLID WHITE LINE (4" WIDTH MIN)
SL	STOP LINE (12" WIDTH)
CONC	CONCRETE
CEMENT	CEMENT
EOP	EDGE OF PAVEMENT
BIT	BITUMINOUS
DY	DRAINWAY
WCR	WHEEL CHAIR CURB RAMP
SWCHL	SOLID WHITE CHANNELIZATION LINE
DASHED WHITE LINE EXTENSION	DASHED WHITE LINE EXTENSION
PROPOSED	PROPOSED
REMOVE	REMOVE
HMA	HOT MIX ASPHALT
REMOVE	REMOVE

- GENERAL NOTES:**
1. RETAIN ALL EXISTING PAVEMENT MARKINGS AND SIGNS UNLESS OTHERWISE NOTED.
  2. REMOVE ANY EXISTING CONFLICTING PAVEMENT MARKINGS BY A MASSDOT APPROVED METHOD.



Northeast Traffic Control Services, Inc.  
 Manafort Transit  
 Construction of Seawall Project  
 Nantasket Avenue at Fitzpatrick Way and Y Street Hall, MA  
 Construction Plan  
 7/9/24

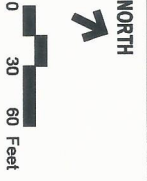




**SITE SPECIFIC: CLOSURE & DETOUR OF NANTASKET AVENUE  
BETWEEN FITZPATRICK WAY AND POINT ALLERTON AVENUE**

SHEET 3 OF 3

- NOTES:
1. SEE TEMPORARY TRAFFIC CONTROL GENERAL NOTES AND LEGEND FOR ADDITIONAL INFORMATION.
  2. SEE TEMPORARY TRAFFIC CONTROL SIGN SUMMARY FOR SIGN INFORMATION.



6/20/2024

Northeast Traffic Control Services, Inc.  
 Manafort Transit  
 Construction of Seawall  
 Nantasket Avenue Hall, MA  
 Temporary Traffic Control Plan  
 Closure & Detour Plan  
 6/20/24

